

CHAPTERS

Power Meters

Detectors

Beam Characterization

Polarimetry

Electronics Accessories

SECTIONS

Biased Photodetectors

Amplified Photodetectors

Photon Counter

Integrating Spheres

Photomultiplier Tubes

Balanced Detectors

Position-Sensing Detectors

Photodiodes

Photocurrent Amplifiers

Cameras

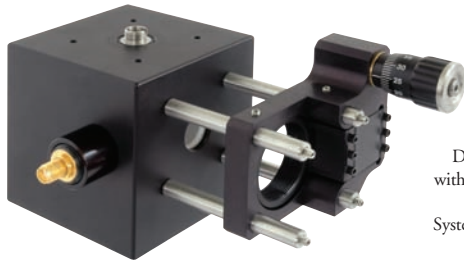
Integrating Spheres

The IS200 Integrating Sphere is a general-purpose integrating sphere enabling high sensitivity measurements of optical signals. An Integrating Sphere evenly spreads the incoming light by multiple reflections over the entire sphere surface. This makes it the ideal instrument for many applications such as laser power, flux, reflectance and radiance measurements.

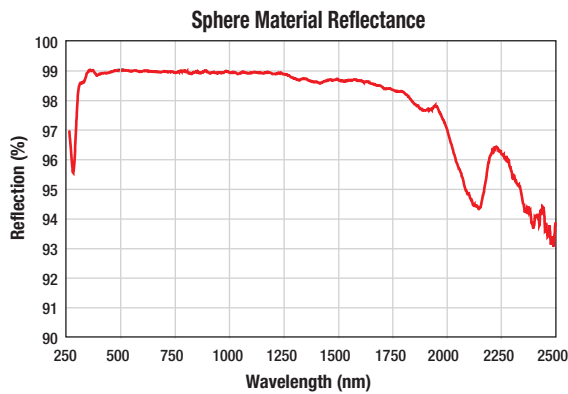
The Input and Output Ports can be equipped with fiber adapters or closed using the included port plugs. The detector port is recessed to avoid direct light exposure to the active area of the photodiode from incidental light. The sphere is manufactured from PTFE-based bulk material, which is highly reflective (250 – 2500 nm) and resistant to heat, humidity, and high levels of radiation.

Our IS200 Integrating Spheres are available with a mounted Si photodiode (350 – 1100 nm), a mounted InGaAs photodiode (800 – 1700 nm), or without a detector. When purchasing an Integrating sphere without a built-in detector, the sphere's operating range is 250 – 2500 nm; any of our SM05PD series of detectors featured on page 1591 can be mounted using the included Ø3 mm detector port, which features SM05 (0.535"-40) threading.

The sphere is compatible with Thorlabs' SM05 thread standard as well as our 30 mm cage systems, thereby enabling easy integration into existing setups. It also features an 8-32 and M4 tap for post mounting.



Directly Compatible with SM05 Lens Tubes and 30 mm Cage Systems (See Page 176)



SMA, FC, and SM05 Adapters Included

Features

- Ø2" Sphere in Black Anodized Aluminum Housing
- Available With or Without Si or InGaAs Detector
 - Si: 350 – 1100 nm (IS236A or IS236A-4)
 - InGaAs: 800 – 1700 nm (IS210C)
- 3- and 4-Port Versions with Ø1/2" Clear Aperture
 - FC and SMA Fiber Adapters Included
 - Recessed Ø3 mm Port Directly Compatible with SM05PD Series of Photodiodes Featured on Page 1591
- SM05 (0.535"-40) and 30 mm Cage System Compatible
- 8-32 and M4 Taps for Post Mounting
- Calibration of Detector/Sphere Available Upon Request

SPECIFICATIONS

Sphere Diameter	2"
Port Diameter	1/2"
Ports	3 or 4 (0°, 90°, 180°, North Pole)*
Photodiode Port**	Ø3 mm
Wavelength Range	350 – 1100 nm (IS236A), 800 – 1700 nm (IS210C) 250 - 2500 nm (Without Detector)
Reflectance	~99% (350 – 1300 nm) >95% (250 – 2500 nm)
Thermal Stability	250 °C (Max)
Laser Damage Threshold	7 J/cm ²
Weight	0.35 kg (0.77 lb)
Dimensions	61 mm x 61 mm x 65 mm (2.4" x 2.4" x 2.56")

*180° Port is for the 4 Port Version Only

**Designed for use with our SM05PD Series of Photodiodes

ITEM #	\$	£	€	RMB	DESCRIPTION
IS200	\$ 950.00	£ 684.00	€ 826,50	¥ 7,571.50	Ø2" Integrating Sphere, 3 Ports Without Detector
IS200-4	\$ 970.00	£ 698.40	€ 843,90	¥ 7,730.90	Ø2" Integrating Sphere, 4 Ports Without Detector
IS236A	\$ 990.00	£ 712.80	€ 861,30	¥ 7,890.30	Ø2" Integrating Sphere, 3 Ports with Si Detector, 350 – 1100 nm
IS236A-4	\$ 1,005.00	£ 723.60	€ 874,35	¥ 8,009.85	Ø2" Integrating Sphere, 4 Ports with Si Detector, 350 – 1100 nm
IS210C	\$ 1,140.00	£ 820.80	€ 991,80	¥ 9,085.80	Ø2" Integrating Sphere, 3 Ports with InGaAs Detector, 800 – 1700 nm