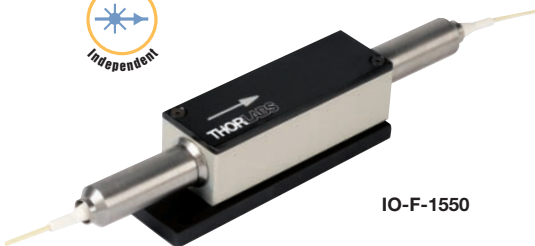


1550 nm, 5 W Polarization-Independent Fiber Isolators



IO-F-1550

The IO-F-1550 and IO-F-1550APC are polarization-independent fiber isolators designed for use in the 1530 to 1570 nm range with powers up to 5 W. Returning light is displaced from the optical axis, resulting in 32 to 38 dB of isolation. Due to the polarization-independent nature of these isolators, the insertion loss and the isolation value will not change with respect to the input or returning light's state of polarization.

Specifications

- **Wavelength:** 1550 ± 20 nm
- **Power:*** 5 W CW (Max)
- **Isolation:** 32 – 38 dB
- **Insertion Loss:** 0.4 – 1.0 dB
- **PDL:** ≤0.15 dB
- **Return Loss:** >55 dB
- **Fiber:** SMF-28e+

*Power rating is specified only for the isolator. Proper laser termination is critical.

ITEM #	\$	£	€	RMB	CONNECTORS	DESCRIPTION
IO-F-1550	\$ 1,250.00	£ 900.00	€ 1,087.50	¥ 9,962.50	None	5W, SM Fiber Isolator, 1550 nm
IO-F-1550APC	\$ 1,290.00	£ 928.80	€ 1,122.30	¥ 10,281.30	FC/APC	5W, SM Fiber Isolator, 1550 nm

1550 nm, 10 W Polarization-Independent Fiber Isolator



IO-K-1550

Specifications

- **Wavelength:** 1550 ± 20 nm
- **Power:*** 10 W CW (Max)
- **Isolation:** 30 – 38 dB
- **Insertion Loss:** 0.8 – 1.5 dB
- **PDL:** ≤0.25 dB
- **Return Loss:** >55 dB
- **Fiber:** SMF-28e+

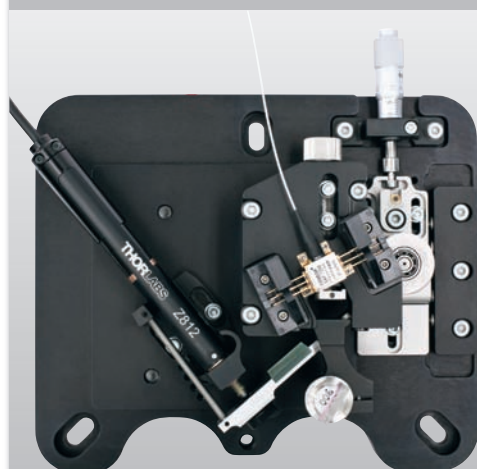
*Power rating is specified only for the isolator. Proper laser termination is critical.

The IO-K-1550 fiber isolator is a high-power, polarization-independent fiber isolator designed for operation in the 1530 to 1570 nm range. Using our high-power handling knowledge for free space and fiber-coupled isolators, we are able to produce the high power, fiber-coupled isolators. The IO-K-1550

employs fiber technologies and thermal management techniques to push the damage thresholds to higher levels. This particular fiber isolator, which utilizes SMF-28e+ on both the input and output of the isolator, is capable of handling CW powers up to 10 W and peak powers up to 2 kW.

ITEM #	\$	£	€	RMB	CONNECTOR	DESCRIPTION
IO-K-1550	\$ 1,950.00	£ 1,404.00	€ 1,696.50	¥ 15,541.50	None	10 W, SM Fiber Isolator, 1550 nm

Have you seen our...



Tunable Laser Kits

- ◆ Modular Design with User-Customizable Optics, Gain Chip, Tuning, etc.
- ◆ Linewidths Less than 130 kHz
- ◆ 10 dB Tuning Ranges up to 170 nm
- ◆ Laser Components Stocked to Maximize Configurability

The Tunable Laser Kit line is a rapidly growing family of tunable lasers that give users full access to the laser cavity. With unsurpassed user configurability, Tunable Laser Kits are an excellent choice for customers that need to tailor a laser to their application.

See pages 1286 – 1299