

S100RH - August 27, 2018

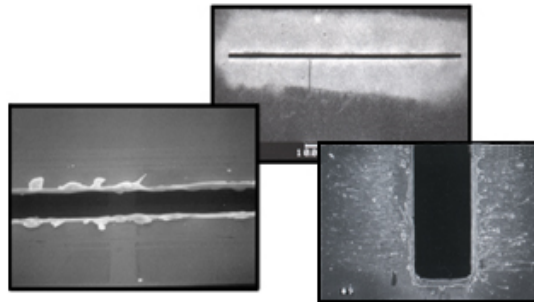
Item # S100RH was discontinued on August 27, 2018. For informational purposes, this is a copy of the website content at that time and is valid only for the stated product.

MOUNTED OPTICAL SLITS

10 Slit Widths Available Ranging from 5 - 200 μm
 Ø1" Housing is SM1 Compatible
 High Damage Threshold



S50RH



[Hide Overview](#)

OVERVIEW

Optical Slit Dimensions & Material

- Slit Widths Available: 5 - 200 μm (See Table to Right for Details)
- Slit Length: 3 mm
- Slit Thickness: 12.7 μm
- Housing: Black Stainless Steel with Ø1" Outer Diameter x 0.10" Thick
- Slit Material: 302 Stainless Steel with Black Oxide Finish
- Unmounted Slit: Ø3/8" (9.5 mm) x 0.0005" (12.8 μm) Thick
- Position Tolerance of Slit: Ø0.006" (Ø0.15 mm) within the Foil Disk

Damage Thresholds

- 5×10^4 W/mm², 75 ns Pulse @ 700 nm
- 1×10^5 W/mm², 10 ns Pulse @ 700 nm
- 1×10^3 W/mm², CW @ 10.6 μm

These optical slits are mounted in a Ø1" plate, perfect for mounting in our SM1-series lens tubes (SM1L03). The slit in the foil disk is not necessarily aligned horizontally or vertically during the assembly process.

If you do not see what you need in our stocked offerings below, it is possible to special order slits that are fabricated from different substrate materials, have different slit sizes, incorporate multiple slits in one foil, or provide different slit configurations. Customized housings are also available. Please contact Tech Support to discuss your specific needs.

Please Note: We are having quality issues with these

Item #	Slit Width	Tolerance	Housing Material
S5RH	5 μm	± 1 μm	Black Stainless Steel
S10RH	10 μm	± 1 μm	
S15RH	15 μm	± 1.5 μm	
S20RH	20 μm	± 2 μm	
S30RH	30 μm	± 2 μm	
S40RH	40 μm	± 3 μm	
S50RH	50 μm	± 2 μm	
S100RH	100 μm	± 4 μm	
S150RH	150 μm	± 4 μm	
S200RH	200 μm	± 4 μm	

mounted slits that is evidenced by corrosion at the slit edge after a period of time. Although we are rapidly working through a testing and validation process to ensure we have a stable, high-quality manufacturing process, we anticipate that the lead time on future order requests will be at least 8 weeks. Please contact Tech Support for more information.

[Hide Mounted Optical Slits](#)

Mounted Optical Slits

Part Number	Description	Price	Availability
S5RH	Ø1" Mounted Slit, 5 ± 1 µm Wide, 3 mm Long	\$116.00	Lead Time
S10RH	Ø1" Mounted Slit, 10 ± 1 µm Wide, 3 mm Long	\$110.00	Lead Time
S15RH	Ø1" Mounted Slit, 15 ± 1.5 µm Wide, 3 mm Long	\$110.00	Lead Time
S20RH	Ø1" Mounted Slit, 20 ± 2 µm Wide, 3 mm Long	\$110.00	Lead Time
S30RH	Ø1" Mounted Slit, 30 ± 2 µm Wide, 3 mm Long	\$101.00	Lead Time
S40RH	Ø1" Mounted Slit, 40 ± 3 µm Wide, 3 mm Long	\$95.75	Lead Time
S50RH	Ø1" Mounted Slit, 50 ± 2 µm Wide, 3 mm Long	\$95.75	Lead Time
S100RH	Ø1" Mounted Slit, 100 ± 4 µm Wide, 3 mm Long	\$95.75	Lead Time
S150RH	NEW! Ø1" Mounted Slit, 150 ± 4 µm Wide, 3 mm Long	\$95.75	Lead Time
S200RH	Ø1" Mounted Slit, 200 ± 4 µm Wide, 3 mm Long	\$95.75	Lead Time



100µm