

Optics

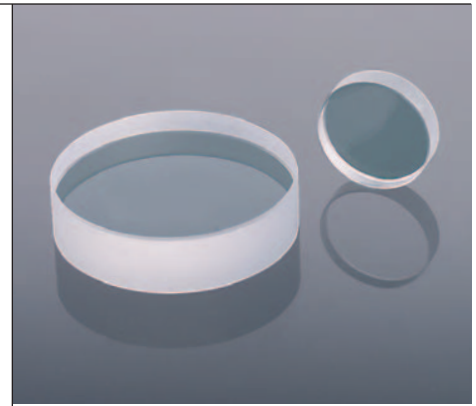
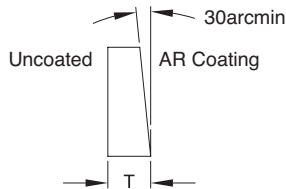
Beam Samplers - Beam Pick-off

Specifications

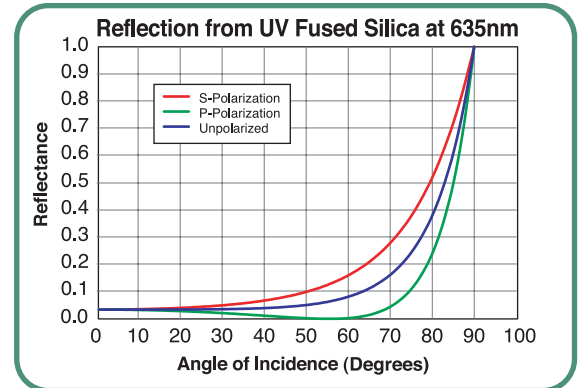
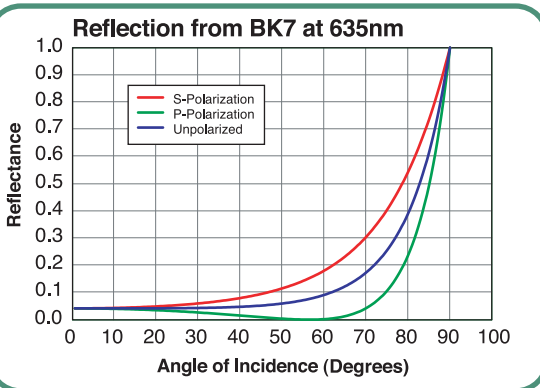
- **Material:** BK7 or UV Fused Silica
- **Surface Flatness:** $\lambda/10$ @ 633nm Over the Clear Aperture
- **Wedge:** 30 ± 10 arcmin
- **Diameter Tolerance:** $+0.0/-0.2$ mm
- **Center Thickness Tolerance:** ± 0.4 mm
- **Scratch-Dig:** 20-10
- **Coating on Surface:**
 - 1: None
 - 2: Broadband AR Coating $R < 0.5\%$ Within Wavelength Range
- **Clear Aperture:** 90% of the Diameter

These beam samplers use Fresnel reflections to pickoff 1-10% of the incident beam at 45° (see plots below). They are typically used for monitoring applications where the attenuation of the transmitted beam must be kept to a minimum.

The back surface is wedged to eliminate internal interference fringes and AR coated to remove ghosting. The beam samplers are made with substrates of BK7 or UV fused silica. Beam samplers made from UV fused silica should be used in more demanding applications that require thermal stability and minimal changes to the wavefront characteristics.



- $\text{Ø}1/2"$ (12.7mm), $\text{Ø}1"$ (25.4mm), and $\text{Ø}2"$ (50.8mm) Available
- 1-10% Reflectance @ 45°
- AR-Coated Back Surface to Eliminate Ghosting
- 0.5° Wedged to Eliminate Interference Fringes
- BK7 or UV Fused Silica Substrate



ITEM# (400-700nm)	ITEM# (700-1100nm)	ITEM# (1100-1600nm)	DIAMETER	MATERIAL	\$	£	€	RMB	T ¹	SUGGESTED MOUNT
BSP05-A1	BSP05-B1	BSP05-C1	1/2"	BK7	\$ 31.50	£ 19.80	€ 29.30	¥ 300.80	3mm	LMR05
BSF05-A1	BSF05-B1	BSF05-C1	1/2"	UV Fused Silica	\$ 33.60	£ 21.20	€ 31.20	¥ 320.90	3mm	LMR05
BSP10-A1	BSP10-B1	BSP10-C1	1"	BK7	\$ 52.50	£ 33.10	€ 48.80	¥ 501.40	5mm	LMR1
BSF10-A1	BSF10-B1	BSF10-C1	1"	UV Fused Silica	\$ 56.70	£ 35.70	€ 52.70	¥ 541.50	5mm	LMR1
BSP20-A1	BSP20-B1	BSP20-C1	2"	BK7	\$ 79.80	£ 50.30	€ 74.20	¥ 762.10	8mm	LMR2
BSF20-A1	BSF20-B1	BSF20-C1	2"	UV Fused Silica	\$ 86.10	£ 54.20	€ 80.10	¥ 822.30	8mm	LMR2

¹Maximum edge thickness

**TOOLS
OF THE
TRADE**

Expanding the Line OPTICAL POWER AND ENERGY METERS

- Large Selection of UV to IR Sensors Covering the Power Range 35nW to 30W
- Interchangeable Sensors With NIST Traceable Calibration Data



NEW PM300 Dual Channel Power Meter



SEE OUR ENTIRE POWER METER LINE ON PAGES 946-961